

MANUFACTURE STANDARD, MANUFACTURE RELIANCE

RT-9700

Semi-auto Chemistry Analyzer



Features

- 7" color LCD, touch-screen & keypad
- Reagent open system supports flow cell and cuvette mode, close system on request
- Analytical modes include kinetic, fixed time, bichromatic end-point with or without reagent blank or sample blank, linear or non-linear calibration
- Real-time curve monitoring enhances the reliability of result
- Large memory, up to 75 test protocols can be programmed
- Powerful QC function: Westguard Multi-rule, Levey Jennings plot, 2 controls per test
- Auto power-on self-check
- Additional lamp saving
- Multiform result output including patient comprehensive report



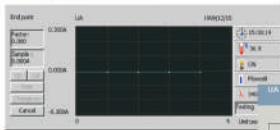
RT-9700

Semi-auto Chemistry Analyzer

Test Report		
General		Date: 28/10/2003
Sample No: 03	Name: XXX	Sex: Male Age: 28
Dept.: xx	Patient No: 003	Sender: XXX
Test	Result	REF Range
ALT	39.311U/L	0.00-40.00
AST	110.239U/L	0.00-37.00
TP	98.225 g/L	46.00-87.00
ALB	52.055 g/L	38.00-44.00



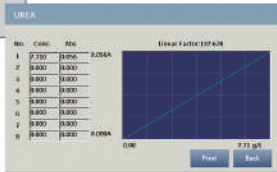
Reaction Curve



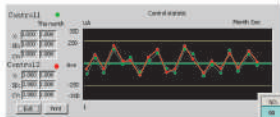
Programming

Test List

Calibration



Quality Control



Patient Data Management

Technical Specifications

Photometric Range	-0.500-2.500Abs
Resolution	0.001Abs(displayed), 0.0001Abs(calculated)
Light Source	Tungsten halogen lamp, 6V/10W
Wavelengths	340, 405, 500, 546, 578, 620, 670nm,
	1 more filter optional
Wavelength Accuracy	±1nm
Half band width	≤10nm
Aspirate Volume	200~6000μL
Carryover	<1%
Memory	75 test protocols, maximum 10000 test result
Interface	RS-232, USB, LAN
Flow Cell	30μL quartz flow cell
Cuvette Mode	12.5mm*12.5mm cuvette optional
Temperature Control	25°C, 30°C, 37°C ±0.5°C and ambient temperature
Display	7" color LCD (800*480 pixels)
Input	Mouse and optional external keyboard
Output	Built-in printer or external printer (optional)
Net Weight	6.5Kg
Dimensions L × W × H (mm)	350×362×180
Power Supply	a.c.100V-240V, 50Hz/60Hz

Rayto Life and Analytical Sciences Co.,Ltd.

2nd Floor, 5th Building, Software Park, NO.2, Gaoxinzhang
3rd Road, High-tech Industrial Park, Nanshan,
Shenzhen 518057, P.R. China
Tel: +86(755)86168996 Fax: +86(755)86168796
Email: info@rayto.com

