

### Introduction:

- Intelligent CASA is a system designed to provide objective quantitative analysis of human semen sample following criteria established by World Health Organization (W.H.O.). about motility, concentration and morphology.

### System Components:

- Laptop or All in one PC includes Intelligent CASA Software
- Trinocular microscope • Intelligent CASA Camera
- Color Printer (Optional) • Accessories

### Motility and Concentration:

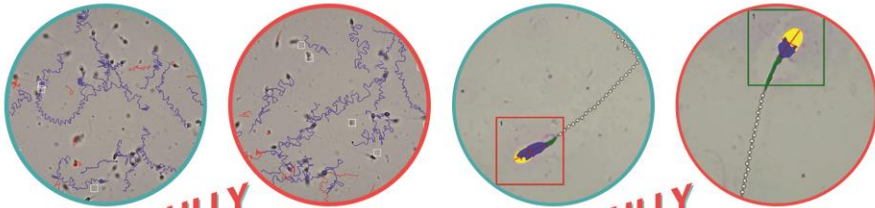
- Intelligent CASA determine spermatozoa concentration million/ml classify spermatozoa movement parameter into Progressive, Non progressive and Immotile
- Measure spermatozoa motion parameter : VCL, VAP, VSL, STR, LIN, WOB.

### Morphology:

- Intelligent CASA designed to determine spermatozoa morphological parameters.
- Intelligent CASA can automatically calculate TZI, MAI & SDI.

### Features and specification:

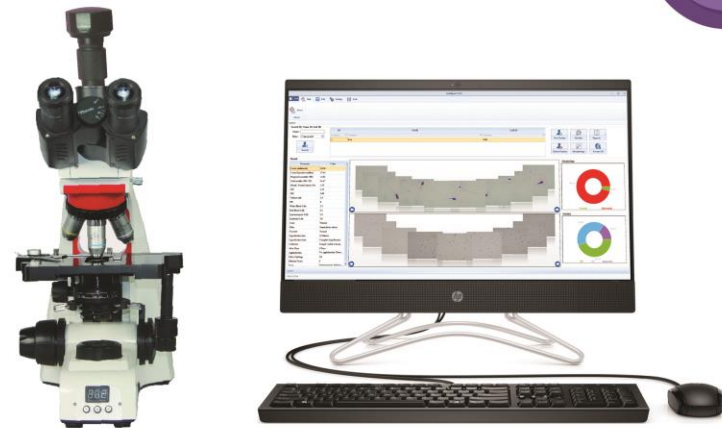
- Intelligent CASA save the user time by providing fast and accurate results.
- Intelligent CASA provides high technology with low cost.
- The software able to automatically add appropriate comments according to results.
- The database enables to generate smart and statistical reports.
- The database enable user to backup and restore patient data.
- The software provides burning patient result on CDs.
- Intelligent CASA in general is user friendly.



**FULLY  
AUTOMATED  
MOTILITY  
SYSTEM**

**FULLY  
AUTOMATED  
MORPHOLOGY  
SYSTEM**

دلتا كير  
DELTA CARE



**Intelligent CASA**

COMPUTER ASSISTED SEMEN ANALYSIS

Delta Care For Medical Supplies

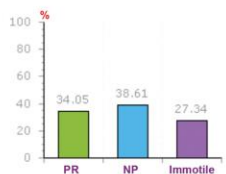
01010060298 - 01210629090

[www.delta-care.com](http://www.delta-care.com)



## FULLY AUTOMATED MOTILITY SYSTEM

*Sperm Distribution*



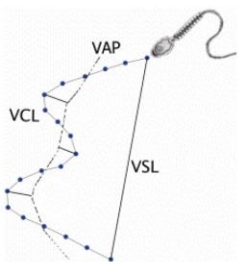
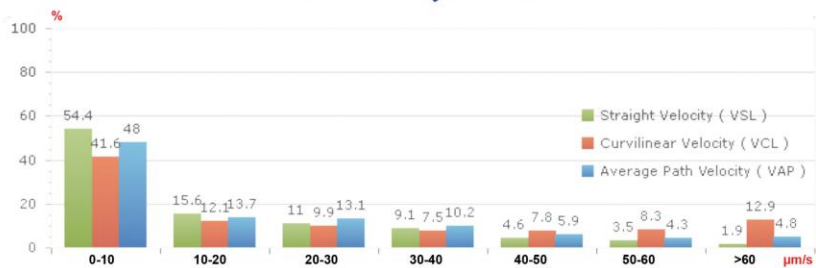
● Progressive (PR)  
● Non progressive (NP)  
● Immotile (IM)

● Pin Head     ● Red Blood Cells  
● White Blood Cells     ● Spermatozoic Cells

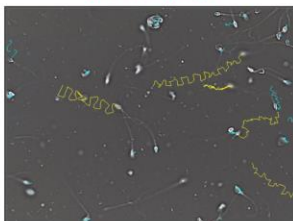
*Sperm Track Image*



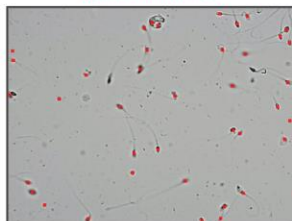
### Semen Analysis Chart



*Dark Field Image*



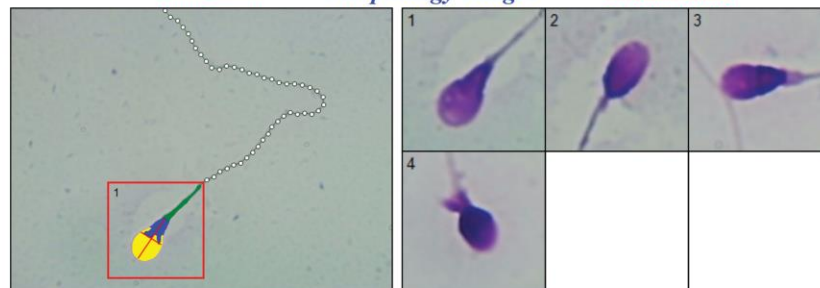
*Sperm Count Image*



## FULLY AUTOMATED MORPHOLOGY SYSTEM



Normal Sperm     Morphology Images     Abnormal Sperm



Sperm No	Length	Width	Acrosome	Area	Perimeter	Ellipticity	Elongation	Roughness	Regularity
1	5.11	2.56	78.87	12.68	11.82	2	0.33	1.09	0.77
2	4.35	2.49	63.7	11.74	10.45	1.75	0.27	1.29	0.69
3	4.52	2.24	45.67	11.62	10.42	2.02	0.34	1.28	0.65
4	3.91	2.44	22.91	10.94	9.65	1.6	0.23	1.41	0.65

Ref. Values: Length: (4-5.5)μm | Width: (2.5-3.5)μm | Acrosome: (40-70)% | Area: (7.85-15.1)μm<sup>2</sup> | Perimeter: (10.8-14.9)μm



**DNA  
FRAGMENTATION**



**VITALITY**